



MECKLENBURG COUNTY
Area Mental Health, Developmental Disabilities and
Substance Abuse Services
September 6, 2011

PROVIDER HOT SHEET

- ⇒ Mecklenburg County providers are to be reminded that all child and family teams must go through the care review process to access out of state placement for children. This is inclusive of MH, DD, and SA providers within our provider network. The enclosed fact sheet outlines additional ways that care review might be beneficial to child and family teams and the process for requesting a care review session.
- ⇒ DHHS has scheduled five CAP-I/DD Informational Sessions for the purpose of communicating the changes in the CAP-I/DD Comprehensive and Supports Waivers that will be effective 11/1/11. The sites for the sessions were selected to accommodate as many interested individuals as possible. DDTI will also be sending this information out in a blast to participants of previous events.

Please share this information with individuals, families and other stakeholders who may be interested in attending. Be sure to register early and encourage others to do the same.

Please use the links below for obtaining all the details regarding each of the events and for registration purposes:

- Tuesday, Sept. 20, Greenville [Register here.](#)
- Wednesday, Sept. 21, Wilmington [Register here.](#)
- Monday, Sept. 26, Asheville [Register here.](#)
- Tuesday, Sept. 27, Newton [Register here.](#)
- Wednesday, Sept. 28, Sanford [Register here.](#)

Please note that these sessions will present information only on the CAP I/DD Waiver to be effective 11/1/11. Information on the Innovations Waiver will not be presented during these sessions.

- ⇒ **SAVE THE DATE:** Please join us for the SOC Awards Kick-Off Ice Cream Social event on Thursday, September 29, 2011 from 3:00-4:30 pm at Sam Billings Center, 429 Billingsley Road, 2nd Floor Conference Rooms A/B/C/D. Enjoy ice cream with colleagues, community partners, families, and agency representatives while learning about the nomination process for the 2011 SOC Awards.

For more information, please contact Jill Dineen-Scott at 704-336-3793 or email Jill.Dineen-Scott@MecklenburgCountyNC.gov.

- ⇒ **FOR PROVIDER MEDICAL DIRECTORS:**
Please see the information below regarding an exciting new study being conducted through CMC-R's Research Section, under the direction of Dr. Oleg Tcheremissine. Please advise appropriate, interested consumers and their families to obtain more information through the contact person listed at the end of the study description.

Schizophrenia is a chronic neuropsychiatric and neurodevelopmental disorder that affects approximately 1% of the population worldwide. Neuroscientific discoveries over the past decades have enriched our understanding of the neurobiological mechanism underlying a wide range of symptoms of schizophrenia. On a practical level, this significant progress enhanced the treatment armamentarium by drastically increasing a number of psychotropic medications available to clinicians and their patients. Many of the

Mecklenburg Area MH/DD/SA Services
PROVIDER HOT SHEET
September 6, 2011

second-generation or atypical antipsychotics are believed to offer advantages over conventional or first-generation agents in the treatment for schizophrenia. However, these advantages, thus far, have been undermined by concerns about side effects such as weight gain, hyperglycemia and dyslipidemia.

Evidence from several clinical and preclinical studies support the hypothesis that dysregulation of glutamatergic pathways contributes to the pathogenesis of schizophrenia. These findings suggest that mGlu2/3 receptor agonists may be effective for the treatment of schizophrenia. At the CMC-R-Research Section, a new molecule that modulates glutamatergic receptors (LY2140023) is currently being investigated as an antipsychotic agent with a novel mechanism of action. Unlike currently available antipsychotics, LY2140023 does not directly block dopamine receptors. Importantly, based on earlier clinical studies, treatment with this novel antipsychotic agent would not be expected to manifest many burdensome adverse events such as dry mouth, constipation, extrapyramidal side effects, and weight gain. The consequences of weight gain alone are clinically significant, as increased weight can lead to increased risk for diabetes and cardiovascular problems.

The current study is a multicenter, randomized, double-blind, Phase 3 study to assess the safety and efficacy of LY2140023 in patients with schizophrenia during 24 weeks of treatment. The primary outcome measure will be mean weight change. All qualified participants will receive various screening tests, ECG, medical history, complete physical examination, psychiatric assessments, and study drug for no charge. Reimbursement for time and transportation is also available.

For an opportunity to participate, please contact Dineen Gardner: 704-446-7511.

⇒ **One Child One Plan Form Updates – County/System Wide Reporting Requirement by the Juvenile Courts**

Juvenile Court Judges in support of Child and Family Teams and the Mecklenburg County System of Care initiative have instituted a system wide requirement for the presentation of the One Child One Plan Form (OCOP) at all court hearings. Reports other than the OCOP Form are no longer accepted in absence of the OCOP form. Provider agencies, Social Workers, Court Counselors, or other entities presenting in court on behalf of a Child and Family Team must provide the OCOP form as the primary form. Any other reports or documentation may be submitted supplementally.

The Juvenile Court Judges recognize the statutory requirements for various agencies to utilize specified federal/state reporting forms or planning documents. In such cases where federal/state forms and the OCOP form require duplicate information, the federal/state reporting forms are documented and should be submitted as an attachment to the OCOP form.

For individuals who need training or a refresher on how to fill out a OCOP form, MCTI offers CFT 204- Plan Development for Child and Family Teams every month. Participants may register online through AHEC by visiting the MeckCARES Training [website](#) and clicking on the blue AHEC link to navigate to the registration page. This course is \$45 per person and does provide CEUs and hours that count towards the 11 hours of Systems of Care training required by some service definitions. Please check with AHEC at the time of registration to verify you have completed any pre-requisite courses required by CFT 204. For any questions about registration, please call the MCTI Training Coordinator at 704-432-0986.

⇒ Your single point of contact for all suggestions, input, feedback, questions and concerns regarding the Hot Sheet should be directed to Jill Scott, AMH Information/Education Coordinator at Jill.Dineen-Scott@MecklenburgCountyNC.gov. [Subscribe](#) to the weekly Hot Sheet releases.

CLINICAL CORNER

⇒ Phase Two Implementation: Off Label Antipsychotic Monitoring in Children through Age 17

Phase Two Implementation: Children 13 through 17 Years of Age - Start Date August 24, 2011. Effective April 12, 2011, DMA implemented a policy titled Off Label Antipsychotic Monitoring in Children through Age 17. Phase one was the 0 - 12 age group. Implementation of the second phase for ages 13 - 17 is August 24, 2011. The policy requests the prescriber of any antipsychotic medication to a Medicaid recipient in these age groups to document monitoring parameters done that support safe use of the antipsychotic agent. Antipsychotic choices are not limited by the policy.

The policy creates an opportunity to gather information about antipsychotic prescribing trends within the child and adolescent Medicaid population of North Carolina. In accordance with the policy, DMA, in partnership with Community Care of North Carolina (CCNC) is maintaining a registry for providers to document the use of antipsychotic therapy. The registry called A+KIDS (Antipsychotics-Keeping It Documented for Safety) is supported by an advisory panel consisting of child psychiatrists from North Carolina's four medical universities. The registry encourages the use of appropriate baseline and follow up monitoring parameters to facilitate the safe and effective use of antipsychotics in this population.

Objectives of the A+KIDS registry include improvement in the use of evidence-based safety monitoring for antipsychotics; reduction of antipsychotic polypharmacy; and reduction of cases with the prescribed dose differing from the FDA approved dosage for an indication. Data elements collected within the registry reflect a generally accepted monitoring profile for the safety and efficacy follow-up of the prescribed antipsychotic pharmacotherapy. The requirement of safety monitoring documentation in the registry by the prescriber occurs when:

- The antipsychotic is prescribed for an indication that is not approved by the FDA.
- The antipsychotic is prescribed at a different dosage than approved for a specific indication by the FDA.
- The prescribed antipsychotic will result in the concomitant use of two or more antipsychotic agents.

About the A+KIDS Registry:

Prescribers are directed to the A+KIDS website <http://www.documentforsafety.org> to register as an A+KIDS provider to enable access to the online registry or to learn more about this initiative. Pharmacy providers are encouraged to visit the website to understand how the policy may impact pharmacy claims processing for antipsychotic medications.

⇒ The mental health field is paying a renewed intense and deserved attention to the issues of childhood trauma and its implications for attachment and effective interventions. An upcoming training on "Trauma and Attachment Issues for Children" is being offered by Duke University and the Center for Child and Family Health and the NC Division of MH/SA/DD on Sept. 28 and 29 at the Black Mountain Home for Children in Black Mountain, NC.

The course objectives for Day 1 are:

- Participants will increase understanding of the child-caregiver attachment process and its impact on child behavior.
- Participants will differentiate insecure attachment, trauma within the attachment relationship, and Reactive Attachment Disorder.
- Participants will learn how traumatic stress impacts young children and adolescents.
- Participants will become familiar with differential diagnoses related to early trauma and attachment difficulties.

Mecklenburg Area MH/DD/SA Services
PROVIDER HOT SHEET
September 6, 2011

The course objectives for Day 2 are:

- Participants will learn how early childhood trauma affects behavior and other developmental outcomes.
- Participants will become better consumers or providers for children with attachment and trauma histories.
- Participants will learn about evidence-informed and evidence-based treatments for children with attachment problems, trauma symptoms, and/or disruptive behavior and how to locate the services and receive training.
- Participants will apply behavior management principles to case scenarios.

Register with Anna North at Eastpointe LME (anorth@eastpointe.net)

⇒ All of us were probably “rattled” by the recent earthquake that was felt in our region and beyond, and hurricane season is also upon us. Expect the unexpected and be prepared!! This is a good time for providers to revisit their disaster plans and revise them where necessary. Consumers should also be alerted as to how to contact their providers should a disaster strike, and have access to information about the best ways to cope in such extraordinary circumstances. Please also note that the LME wants to hear from all providers regarding their disaster preparedness and their readiness to assist should community needs arise. More information about related training and resources will be coming this fall!

PROVIDER COUNCIL REMINDERS AND UPDATES

⇒ The Provider Outreach Subcommittee is holding a Provider Orientation Session **Wednesday, September 21, 2011 at 12:30 pm** in the Carlton Watkins Center Multipurpose room. The session last approximately 30 minutes. This session is for providers that are new to Mecklenburg County.

⇒ **Provider Council Sub-Committees** – Four standing subcommittees have been formed by the Provider Council. If you are interested or want more information, please contact the committee chairs. The four committees are:

○ **Training and Development Committee**

- ◆ Lisa Davis Co-Chair), Genesis Project, 704-596-0505 ldavis@genesisproject1.org
- ◆ Jessie Dancy Co-Chair), First Choice, 704-535-4342 ext 102 Firstchoiceincjd@gmail.com
> The next scheduled meeting is **Wednesday, September 21, 2011 at 9 AM** in the Carlton Watkins Center Multipurpose room.

○ **Quality Improvement Sub-Committee** - The general purpose of this committee is to collectively organize a sound quality approach to delivery of clinical service as well as general standards for quality for MH/SA/DD providers.

- ◆ Angela Bunting (Co-Chair), BWB Connections, 704-596-5553
Angela.Bunting@connectionsbw.com
- ◆ Sonyia Richardson (Co-Chair), Another Level Counseling & Consultation, 704-548-5298
srichardson@anotherlevels.com
- ◆ > The next meeting will be on **Wednesday, September 21, 2011 at 10:30 AM** in the Carlton Watkins Center Multipurpose room.

○ **Provider Outreach Sub-Committee** – The general purpose is to establish mechanisms for the Provider Council to connect with new providers, to provide them basic resource information and to introduce them to the Provider Council.

- ◆ Miranda Little (Co-Chair), Family Preservation Services, Inc., 704-344-0491, MLittle@fpsc.com
- ◆ Dellyne Samuel (Co-Chair), Total Care & Concern, dellyne@totalcareandconcern.org
- ◆ > The next meeting will be on **Wednesday, September 21, 2011 at 12:00 PM** in the Carlton Watkins Center Multipurpose room.

○ **Provider Relations Sub-Committee**

- ◆ Kira Wilson (Co-Chair), The Arc of NC, 704-568-0112, kwilson@arcnc.org

Mecklenburg Area MH/DD/SA Services
PROVIDER HOT SHEET
September 6, 2011

- ◆ Tim R. Holland (Co-chair) Person Centered Partnerships, 704-319-7609,
Tim.Holland@pccpartnerships.org
> The next scheduled meeting is **Wednesday, September 21, 2011 at 1:30 PM** in the Carlton Watkins Center Multipurpose room.

EDUCATION AND TRAINING OPPORTUNITIES

- ⇒ **MeckCARES Training Institute** offers a full range of high-quality classroom and now [online courses](#) that meet state service definitions and requirements and will empower you to improve outcomes for youth and families. [Register](#) Today!
 - Learn about System of Care principles and practices
 - See how Child and Family Teams should operate
 - Gain knowledge, power and respect to strengthen families and improve lives

- ⇒ **Mecklenburg's PROMISE Recovery and Crisis Training Calendar.** MeckPromise is offering free Wellness, Recovery & Crisis Education classes for consumers and providers at our new location 1041 Hawthorne Lane, Charlotte, NC 28205. Please feel free to drop by and see what we've got going on! For more information on our classes please call the main number at 980-321-4021 or John Cunningham at 980-321-4025 or via email at jcunningham@meckpromise.com to request a current calendar.

- ⇒ **The Mecklenburg County Provider Council** has developed a comprehensive Training Calendar designed to serve as a one-stop location to view training events occurring in Mecklenburg County that are supported or sponsored by the provider community, the LME, AHEC or other entities. Following is a link to submit training events: <http://www.meckpromise.com/node/75>. To view training events, click on the following link: <http://www.meckpromise.com/mptc>

- ⇒ **The [LME Monthly AMH Training Calendar](#)** is posted on-line.

- ⇒ **TIP – Training in Innovation and Practice** –The NC Council of Community Programs and the Administrative Services Organization, a group of providers, continue to offer training to help providers adapt to changing circumstances. For a list of currently scheduled training events and to register, go to www.nc-council.org.

- ⇒ **Mental Health Association** offers various training opportunities to include QPR (Question, Persuade, and Refer) suicide prevention training. Please visit website <http://mhacentralcarolinas.org> or call 704-365-3454 for more information.

WEB RESOURCES

- ⇒ [NC Division of MH/DD/SAS](#)
- ⇒ [NC Division of MH/DD/SAS Provider Endorsement Information](#)
- ⇒ [NC Division of MH/DD/SAS Implementation Updates](#)
- ⇒ [Mecklenburg AMH](#)
- ⇒ [AMH Best Practices Committees and Schedule](#)
- ⇒ [AMH Hot Sheet Archive](#)
- ⇒ **1915 (b)(c) Waiver Updates from Division Medical Assistance**
 - [Comparison: NC Innovations and CAP-MR/DD Waivers](#)

Mecklenburg Area MH/DD/SA Services
PROVIDER HOT SHEET
September 6, 2011

- [LME-MCO Appeal Process](#) (per federal CFR 438.400)

⇒ [AMH Provider Document Library](#)

Mecklenburg County Community Collaborative Care Review Teams Fact Sheet

WHAT

Mecklenburg County's Care Review Teams (CRTs) are a cross-organizational mix of parents and professionals who assist child and family teams achieve the outcomes they are working toward. They act in a consultative and collaborative manner, promoting System of Care principles:

- ▶ Family-driven
- ▶ Youth-guided
- ▶ Culturally and linguistically competent
- ▶ Strong reliance on community supports systems
- ▶ Collaboration across agencies
- ▶ Home, community, and school-based
- ▶ Individualized strength-based care
- ▶ Data-driven for continuous improvement
- ▶ Holding ourselves and each other accountable

At the end of the meeting, your team will walk out with an action plan.

FOR WHOM

The CRTs are open to child and family teams working with children with severe emotional disturbances. The Community Collaborative strongly encourages child and family teams to come to Care Review before they have exhausted all resources.

WHERE

The CRTs are held at the Watkins Center, 3500 Ellington Drive, Charlotte, NC 28211

WHEN

Team A – 2nd Friday of each month (1 hour slots) 1:00pm, 2:00pm, and 3:00pm

Team B – 4th Friday of each month (1 hour slots) 1:00pm, 2:00pm, and 3:00pm

Team C – Level III/IV Residential Reauthorizations Requests - 2nd and 4th Thursday of each month (30 minute slots) 1:00pm, 1:30p, 2:00pm, 2:30pm, 3:00pm, and 3:30pm

HOW

To schedule a time with Care Review, contact Paula Cox at Area Mental Health: by phone at 704-432-4267 or by e-mail at paula.cox@mecklenburgcountync.gov. Child and Family teams will generally be scheduled on a first come, first served basis.

WHY

- To obtain the SOC Coordinator/Representative or designee's signature on discharge plans for reauthorizations of residential level III/IV services.
- To get a fresh perspective, especially when:
 - a young person is at risk of an out-of-home placement
 - the team needs help making progress toward its goals
 - the team would like help sorting through disagreements and building consensus among team members
 - the team would like to be coached about options before an issue of custody is brought before a judge
- For review of all requests for out-of-state placement

Schizophrenia Support Group Planning Meeting

If you are interested in the creation of a **Schizophrenia Support Group**, please join us on Monday September 12th, 12:30pm at Mecklenburg's Promise (classroom #2) . We would love to hear your ideas!

September 12, 2011
12:30pm to 1:30pm

Mecklenburg's Promise
Classroom #2
1041 Hawthorne Lane
Charlotte, NC 28205



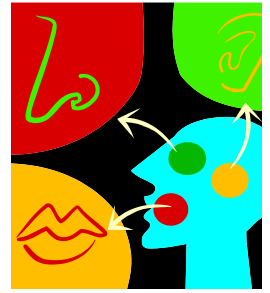
For More Information

Please Contact:
Michael Poindexter at:
704-464-9947

The meeting is designed to identify:

- Purpose
- Objectives
- Format
- Structure of the Group

MPC
Mecklenburg Provider Council



presents
***Cognitive Behavioral
Therapy Training***

**September 19,20, & 27 2011
8:30am-5pm**

--LOCATION: Charlotte NC TBA

REGISTRATION: Register online: www.genesisproject1.org (Registration fees will be payable via Paypal)

***Total training hours: 24 hours including class time and additional reading and assignments.**

****Cost: 135.00**

****Plus \$10 fee for CEU's.**



Dr. Susan Furr is a licensed psychologist who received her PhD from the University of North Carolina at Chapel Hill. She has worked as a school counseling, a psychologist at a university counseling center, and currently is a Professor in the Department of Counseling at the University of North Carolina at Charlotte. She has published on topics such as college student suicide, grief and loss counseling, career counseling, and development of counseling students. A major focus of her training has been in the area of cognitive therapy.

For more information on this Cognitive Behavioral Therapy Training, please contact, Lisa Davis, Training Director at Genesis Project 1, Inc. (704.596.0505)[ldavis@genesisproject1.org]

MPC
Mecklenburg Provider Council



Presents

Person Centered Thinking Training

**Wednesday September 29th and
Thursday September 30th, 2011**

8:30-4pm

Trainer

Amy Mock



Amy Mock is a certified Person Centered Thinking and a certified Systems of Care trainer. She currently works with Alexander Youth Network as the YFS Liaison. She is a Licensed Professional Counselor and has been working with youth and their families for over 15 years utilizing cognitive behavioral and trauma informed therapies.

--LOCATION: Charlotte, NC

REGISTRATION: Register online: www.genesisproject1.org (Registration fees will be payable via Paypal). Other methods of payment are a certified check or money order.

***Total training hours: 12 hours**

Cost: \$80 per person

For more information on this Person Centered Thinking Training, please contact, Lisa Davis, Training Director at Genesis Project 1, Inc. (704.596.0505)[ldavis@genesisproject1.org]

